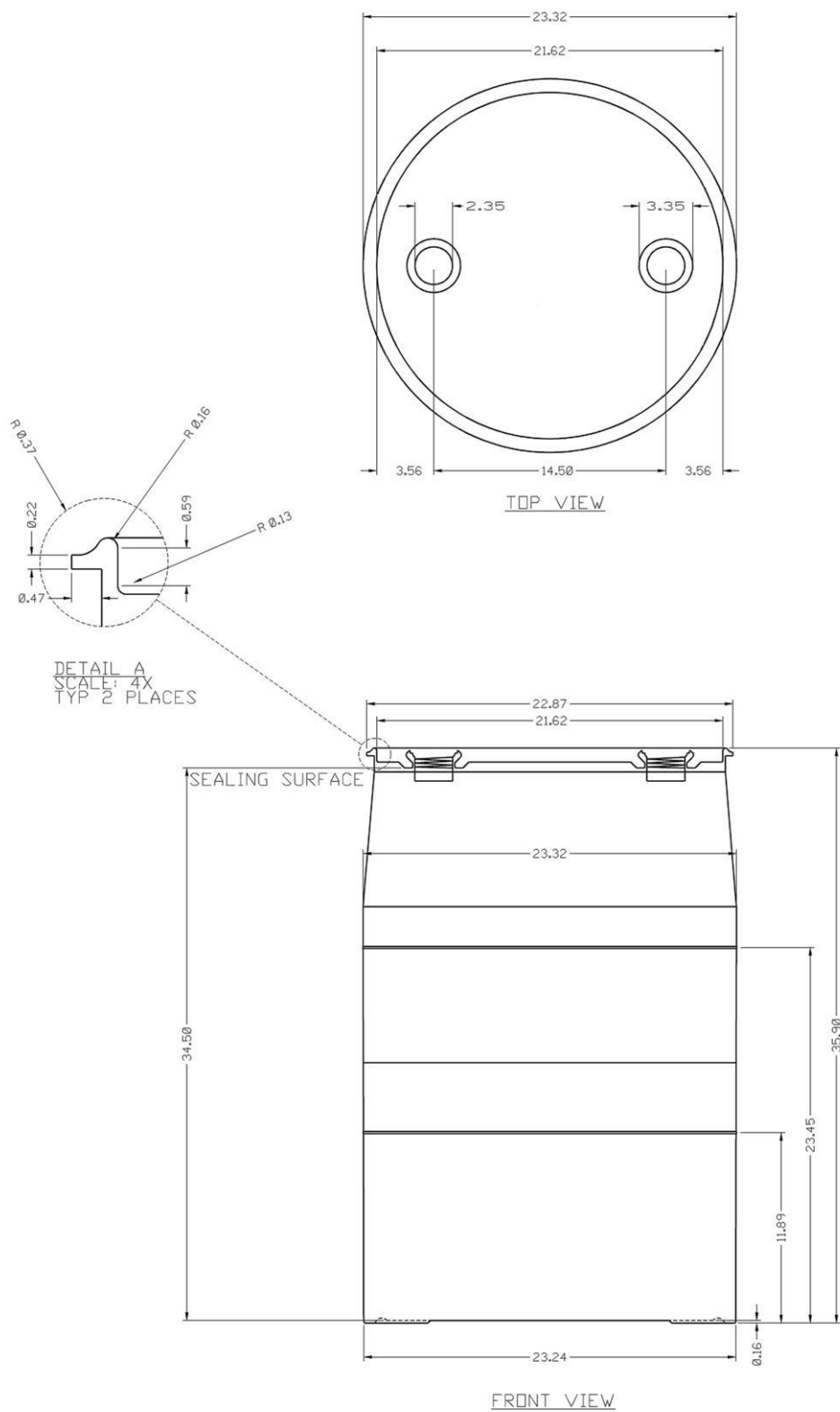




400 West Dussel Drive  
Maumee, Ohio, 43537  
Tel: 419.897.9110  
Fax: 419.897.9112

**ELCO DETREX Drum Description and Specifications**  
**U.S. Coexcell part IC-BLU-0002**  
**U.S. Coexcell – Ultra Clean – 3 Layer Coextruded HDPE Tight Head**  
**IC55 One Piece Drum**

Parameter	Requirements
Drum Description	U.S. Coexcell Inc. IC55 Drum
UN/DOT Certification Mark	1H1/Y1.9/150/xx
Capacity	55 US Gallons (Overflow > 59 Gallons)
Bung Fittings	2 inch Buttress X 2 inch Buttress Rieke PPA-57-B-5-143 Plugs Poly Olefin O-Ring
Exterior Layer Material Color	HDPE w/ Additive Package Blue
Center Layer Color	HDPE w/ Additive Package N/A
Interior (wetted surface) Color	555A HDPE Resin Natural
Weight	23.4 +-
Particle Analysis	As Performed By U.S. Coexcell, Inc Liquid Particle Count Process
Particle Levels	<20 @ 0.50μ per ml
Ultra Clean Reporting	Quarterly Particle Count Reports (upon request)
Specialty Items	One Plug Loose With Tape, Poly Bag over Drum
Dip Tube	Must Accept 35.25 inch (sealing surface to end) Dip Tube



U.S. Coexcell Inc. IC55 Dimensions